

A LONG LASTING  
SUSTAINABLE ALTERNATIVE  
TO TIMBER DECKING



At Ecoscape UK we are so confident in the design and quality of our products, we provide customers with a full sample pack on request. Each contains a selection of Ecoscape UK samples, fixings and information sheets.

---

SUPERIOR DESIGN  
**OUTSTANDING QUALITY**  
EXCEPTIONAL EXECUTION





# ECOSCAPE UK

## COMPOSITES

### CONTENTS

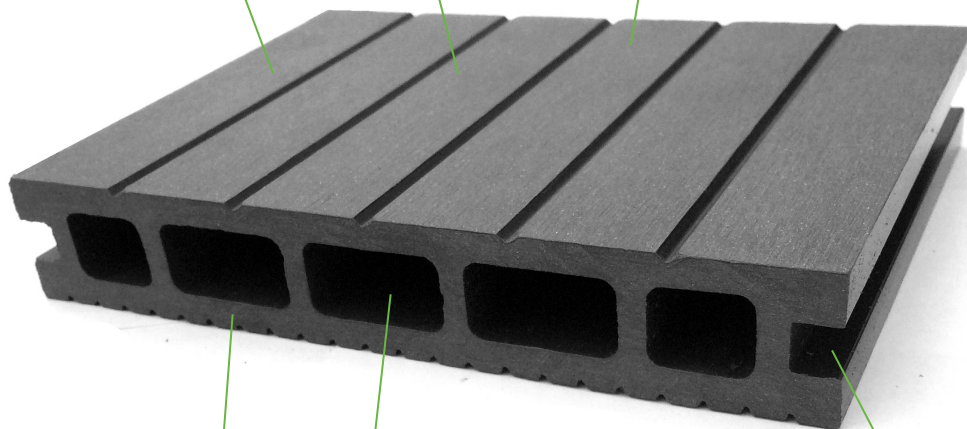
WHAT ARE ECOSCAPE UK COMPOSITES?	four
WHY CHOOSE ECOSCAPE COMPOSITES?	six
COMPOSITE DECKING RANGE	eight
AUTUMN	ten
WALNUT	twelve
GRAPHITE	fourteen
CHARCOAL	sixteen
BALUSTRADING	eighteen
TECHNICAL INFORMATION	twenty
COMPONENTS	twenty two

# WHAT ARE ECOSCAPE UK COMPOSITES?

Ecoscape UK has a splinter free surface, safe for bare feet and little ones.

Ecofriendly dual surface boards made up of recycled wood fibres and recycled polymers

Ecoscape boards have been awarded the highest classification for slip resistance certified to PTV Slip Test BS 79.76-2:2002 slider 55 & 96.



Our boards do not absorb moisture and so are resistant against mould, mildew and warping

Hollow core generates a robust structure without additional mass promising stability, durability and longevity.

Our boards fix with a t-clip system allowing for quick and easy installation there are also no visible unsightly screws.

# WHAT ARE ECOSCAPE UK COMPOSITES?

Ecoscape UK products are environmentally friendly, produced from 55% recycled wood and 45% waste HDPE (typically attained from recycled plastic milk bottles). This combination produces a product with all the workable qualities of wood with out its draw backs. Ecoscape UK composite products are low maintenance. There is no need to paint stain or seal, we just recommend a periodical once over with a jet wash or light brush and hose. Unlike timber which may rot and split Ecoscape UK offers a long life guarantee of 20 years for each of its products.

# WHY CHOOSE ECOSCAPE UK COMPOSITES

## Environmentally Friendly

Composites are environmentally viable, recycled from 55% sustainable wood fibres and 45% recycled HDPE.



## High Friction Surface

Even when wet composites attain the minimum slip potential of the UK slip resistance group guidelines (PTVBS7976-2:2002)



## Natural Feel

Our composites are free from the artificial plastic like feel of other comparable decking products so feels natural to touch and walk on.



## Maintenance Free

No need to paint stain or seal. All 4 versatile colours remain vibrant year in, year out. All that's recommended is a periodical jet wash or a light brush and hose.



### Splinter Free

The natural properties of our wood/plastic composite result in a surface free from splintering and so safe for bare feet and little ones.



### Installation

Easy decking installation using T-clips to fix the boards so there are no unsightly screws. Panels can be inserted between concrete posts or secured with U channels.



### Durability

Composite boards are hardwearing to withstand strong winds without damage, weighty garden furniture and heeled shoes without marking.

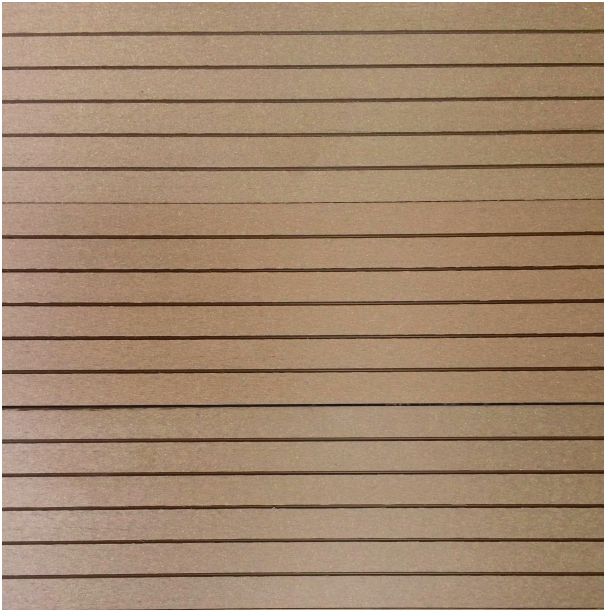


### UV Resistance

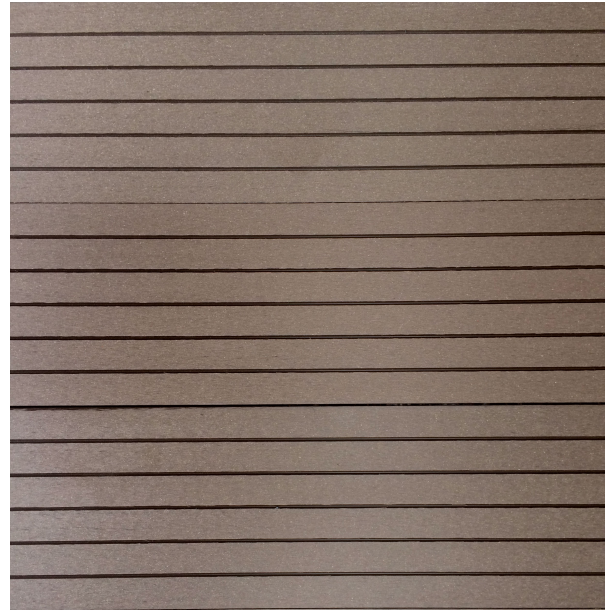
The components of the composite are low in lignin, the naturally occurring fibre that leads to colour fading and greying with UV exposure.



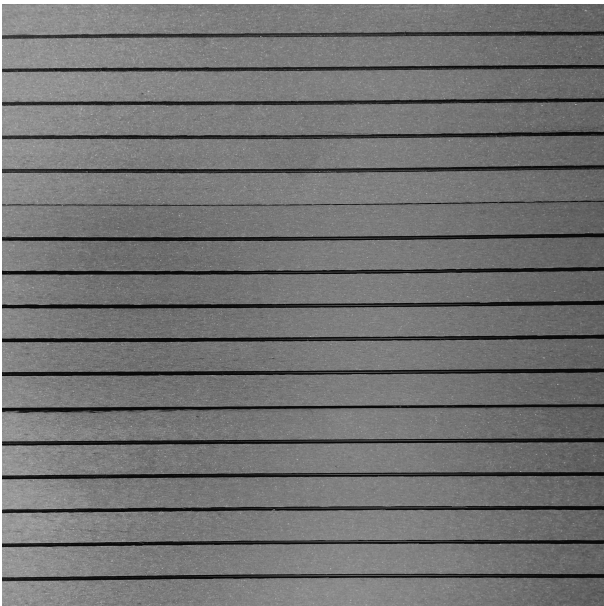
COMPOSITE  
**DECKING**  
RANGE



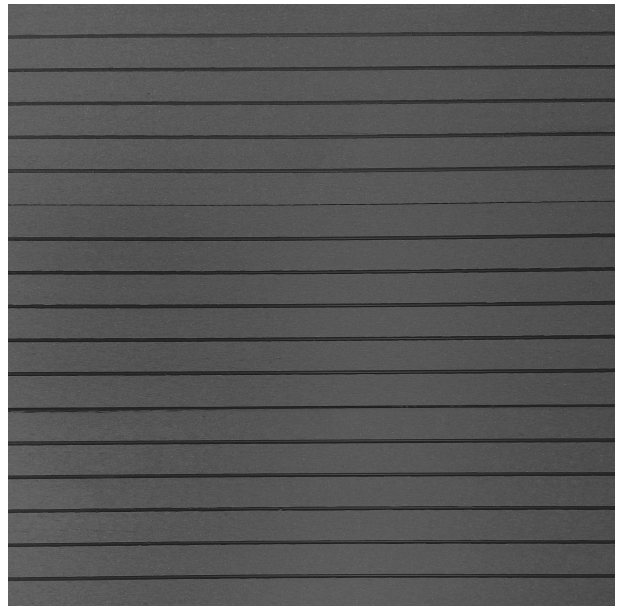
**AUTUMN** ECO05AA Wide Groove



**WALNUT** ECO05AW Wide Groove

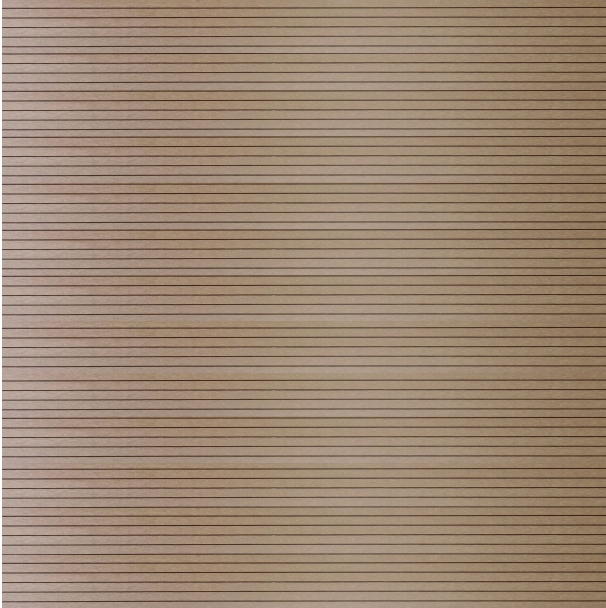


**GRAPHITE** ECO05AA Wide Groove



**CHARCOAL** ECO05AC Wide Groove

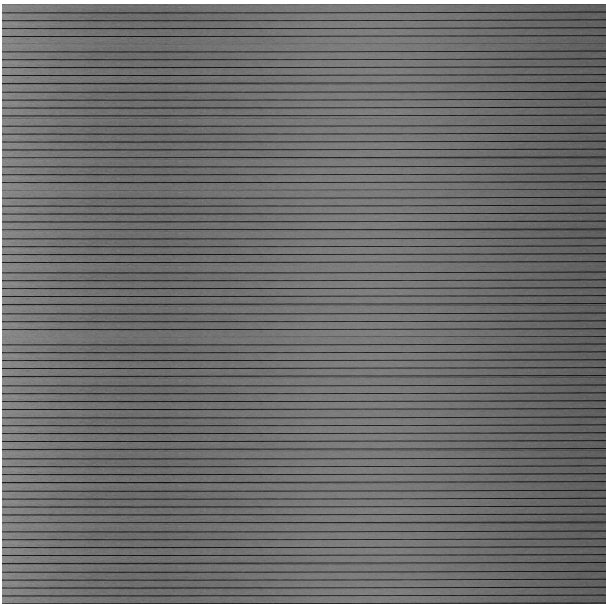
COMPOSITE  
DECKING  
RANGE



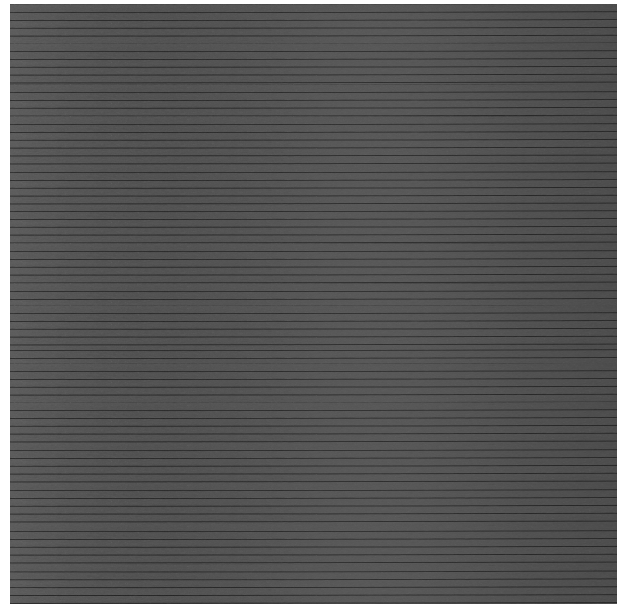
**AUTUMN** ECO05AA Traditional Groove



**WALNUT** ECO05AW Traditional Groove



**GRAPHITE** ECO05AA Traditional Groove



**CHARCOAL** ECO05AC Traditional Groove

# AUTUMN





# WALNUT





# GRAPHITE





# CHARCOAL





# ECOSCAPE UK

## BALUSTRADING

### SYSTEMS

Ecoscape UK composite decking can be accompanied by our range of balustrading options.



We have three highly adaptable systems which incorporate composite, glass and stainless steel to create the balustrade of your choice.



We work with multiple manufacturers of glass balustrading ensuring the system is directly suited to our customers needs.

Be it composite, wire, or glass we will help you find the perfect complement to your new space.



# ECOSCAPE UK

## TECHNICAL

### SPECIFICATIONS

Ecoscape UK products are used for both domestic and commercial use, here is where you will find all the relevant information for planning your Ecoscape UK project.

#### Profile Dimensions

	Standard (mm)	Standard Lengths (mm)	Weight (kg)
Decking Board	150 x 25	2900	7.5
Fascia	42 x 6	2900	2
Newel Post	95 x 95	1200 / 2400	5.25 / 10.5
Handrail	93 x 45	1800	4.15
Spindle	54 x 54	900	1.35
Post Cap	115 x115	35	0.4

Ecoscape composites are environmentally innovative composite materials which combines the best qualities of plastic and wood fibers. Ecoscape decking and balustrade products all have hollow composite profiles and contain no harmful chemicals.

Below indicates the physical and mechanical properties of Ecoscape composites based on independent tests carried out on Ecoscape UK composite deck boards.

Property	Standard Requirement	Ecoscape UK Test Value
Bending strength (N/mm <sup>2</sup> )	> 2.5	6.454
Density (g/cm <sup>3</sup> )	>0.7	2.1
Mass Impact (1kg/1500mm)	>12	No break (>15)
Surface Hardness (HRR)	>58	64
Swelling thickness (% 24h)	<1	0.4
Slip Resistance	>23	Wet 35/Dry 53
Fire Class	F	B

Like the majority of natural products Ecoscape composites expand and contract with changes in temperature. Ecoscape UK composites expand 1mm per 10° C increase. In relation to the temperature of the product, not the air temperature. In direct sunlight, darker composites will reach higher temperatures than lighter colours.

ECOSCAPE UK

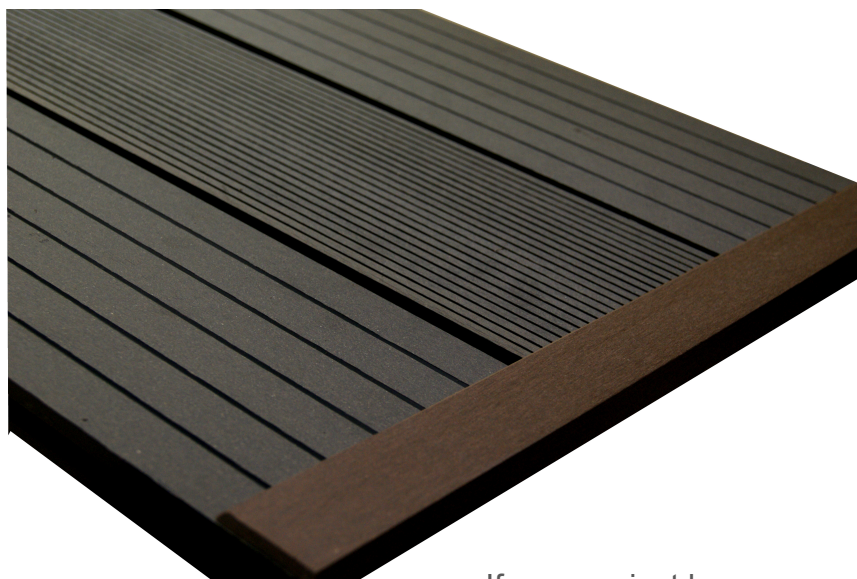
## DECKING & BALUSTRADE

COMPONENTS



### T-clip Fixings

Our composite boards use a t-clip system which secures the boards to the joists without going through the decking boards resulting in elegant screw free finish.



### Angular Fascia Trim

If your project has any exposed edges we use a 6mm thick 45 degree angular fascia to trim the boards. Fascia comes 2900mm lengths



### Colour Coded Poly Pins

Fascia can be fixed one of two ways. The first is using all-weather adhesive available from most DIY stores. The second is pre-drilling a 2mm hole and using our colour coded poly pins to secure the fascia in place.





Head Office  
Unit 1 Higher Broadfield Farm  
Off Pilsworth Road  
Heywood  
Manchester  
OL10 2TA

T: 0845 9011 988  
E: [sales@ecoscapeuk.co.uk](mailto:sales@ecoscapeuk.co.uk)